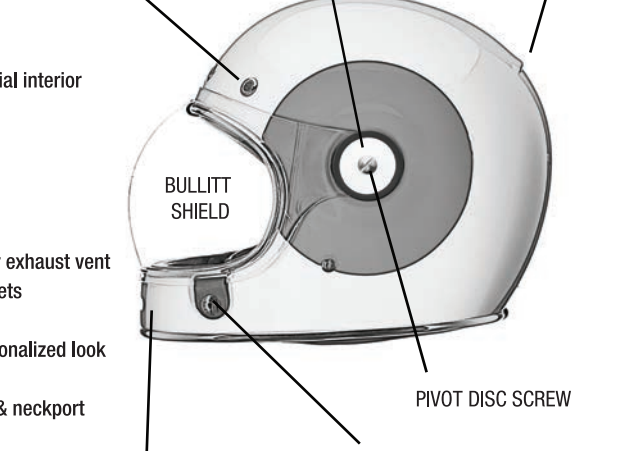


BELL**BULLITT**
INSTRUCTION MANUAL SUPPLEMENT*The Choice of Professionals***BULLITT** OVERVIEW**FEATURES**

- DOT approved
- Ultra low-profile fiber composite shell
- Multi density EPS liner
- Removable, washable and anti-bacterial interior
- Perforated micro suede interior fabric with leather trim
- Padded chin strap with stainless steel D-ring closure with leather pull tab
- 3 shell 3 EPS system
- 5 metal mesh intake vents with 1 rear exhaust vent
- 3D cut cheek pads with speaker pockets
- Magnefusion shield closure system
- Accessory shields available for a personalized look
- Industry-leading five-year warranty
- Rubber or chrome edging on eyepoint & neckport

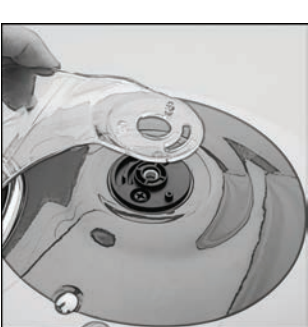
**BULLITT** SHIELD INSTALL

Bullitt Helmet will arrive out of the box with the shield pre-installed and ready for normal highway use.

Follow these steps to install a Bullitt Flat or Bubble shield.



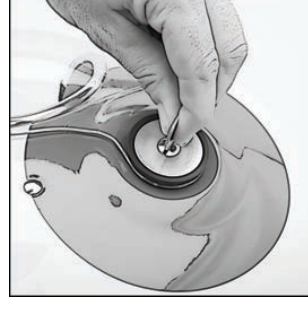
1. Remove left & right pivot discs & screws (You can use a coin)



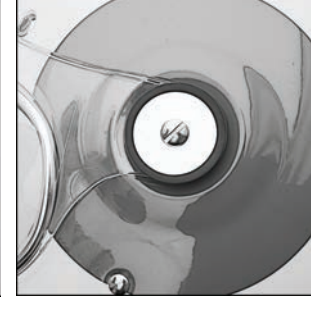
2. Located shield on the Hinge Plate in the closed position



3. Next put the Pivot Disc in place, the pin on the shield will be located into the slot on the pivot disc



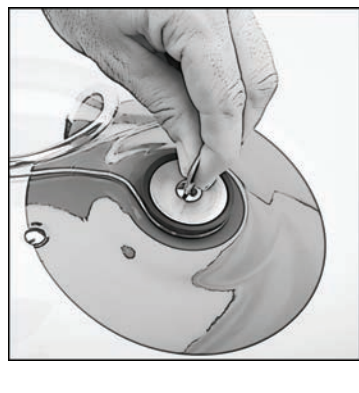
4. Install pivot disc screw and secure the pivot disc to helmet. Repeat steps 3 & 4 for opposite side



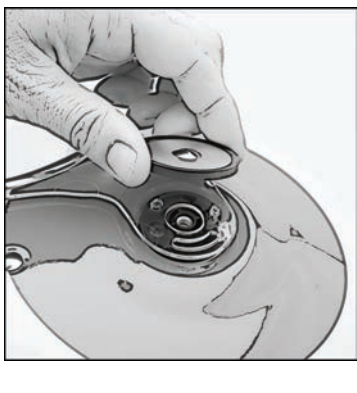
5. Now the Shield is installed on the Bullitt

BULLITT Shield Removal

Follow these steps to use your NEW Bullitt helmet with no shield.



1. Remove left & right pivot discs & screws (You can use a coin)



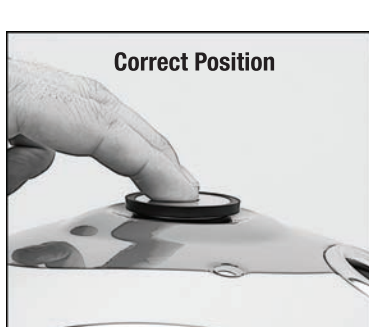
2. Remove the right pivot disc & screw
3. Repeat steps 1 & 2 for left side
4. Remove shield from helmet
5. Now that the shield is off; the pivot discs will need to be installed back on the helmet in the No Shield position (flush mounted)

Pivot Disc**Pivot Plate Pin Hole**

6. The Pivot Discs can be used on either side

Hinge Plate**Hinge Plate Pin**

7. There is one hole on the back of each pivot disc. The pin on the Hinge Plate will need to be located in the Pivot Plate Hole "NO SHIELD" position

**Correct Position****Wrong Hole Position**

8. The Pivot disc will lay flat against the the black Hinge Plate, the gap should be minor

Bell Powersports
5550 Scotts Valley Drive
Scotts Valley, Ca 95066
tel. 831-461-7500

Customer Service
1001 Innovation Road
Rantoul, IL 61866
tel. 800-776-5677
fax. 800-888-9009

BELL SPORTS, INC.
www.bellhelmets.com

www.facebook.com/BellPowersports

www.twitter.com/BellPowersports

instagram.com/bell_powersports





BULLITT

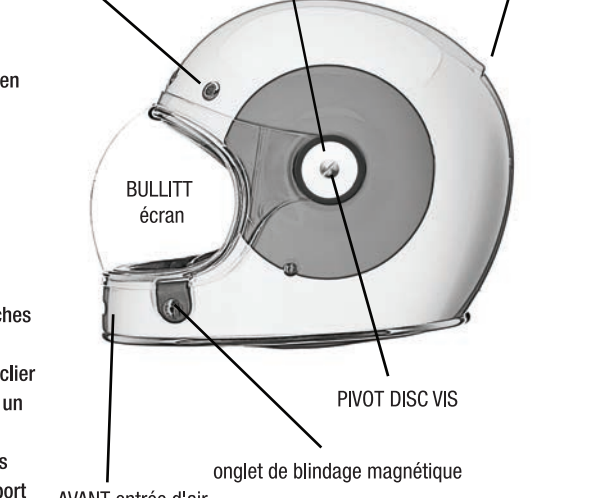
INSTRUCTION MANUEL PLUS

The Choice of Professionals

BULLITT SOMMAIRE

CARACTÉRISTIQUES

- A approuvé DOT
- Ultra faible profil composite de fibre shell
- Multi doublure EPS à densité
- Intérieur amovible et lavable et anti-bactérien
- Perforé micro suède tissu intérieur avec garniture en cuir
- Rembourré jugulaire en acier inoxydable
- Fermeture D-ring avec tirette en cuir
- 3 shell du système 3 EPS
- Entrées d'air de maille 5 de métal avec une arrière évent d'échappement
- 3D coupé coussinets de joues avec des poches de haut-parleurs
- Système de fermeture Magnefusion de bouclier
- Le blindage des accessoires avialable pour un look personnalisé
- Garantie de leader de l'industrie de cinq ans
- Caoutchouc ou bordure de chrome sur eyeport & neckport



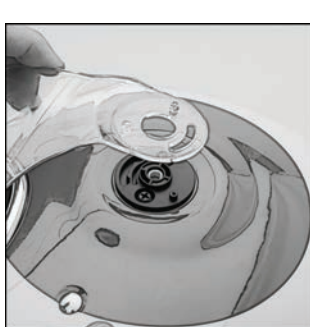
BULLITT Installer écran

Bullitt Casque arrivera hors de la boîte avec le bouclier pré-installé et prêt pour un usage routier normal.

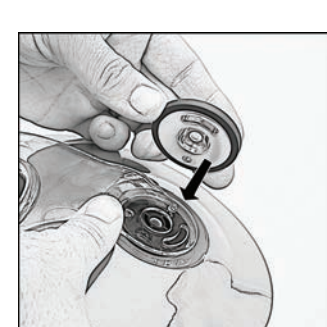
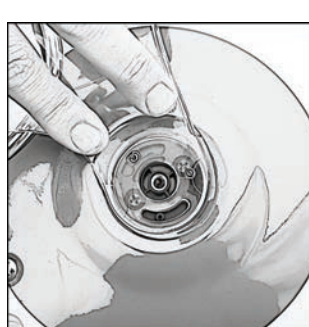
Follow these steps to install a Bullitt Flat or Bubble shield.



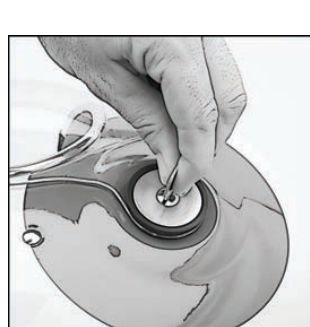
1. Remove left & right pivot discs & screws (You can use a coin)



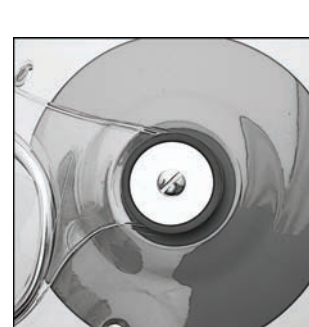
2. Located shield on the Pivot Disc



3. Next put the Pivot Disc in place, the pin on the shield will be located into the slot on the pivot disc



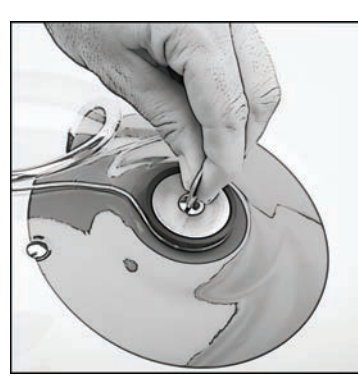
4. Install pivot disc screw and secure the pivot disc to helmet



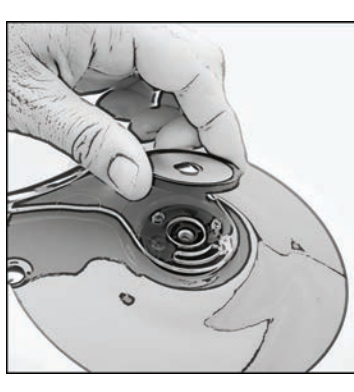
5. Now the Shield is installed on the Bullitt

BULLITT Shield Removal

Follow these steps to use your NEW Bullitt helmet with no shield.



1. Remove left & right pivot discs & screws (You can use a coin)



2. Remove the right pivot disc & screw
3. Repeat steps 1 & 2 for left side
4. Remove shield from helmet
5. Now that the shield is off, the pivot discs will need to be installed back on the helmet in the No Shield position (flush mounted)

Pivot Disc



Pivot Plate Pin here

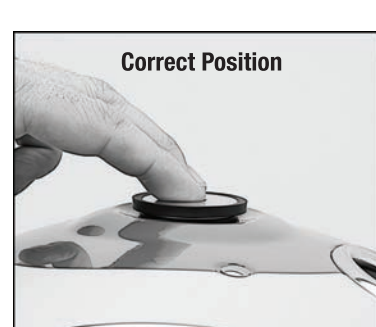
Hinge Plate



Pivot Plate Pin

6. Be sure the right side pivot disc is used on the right of helmet and the left side pivot disc is used on left side helmet. The pivot discs are marked

7. There are two holes on the back of each pivot disc. The pin on pivot plate will need to be located in "NO SHIELD" position



Correct Position



Wrong Hole Position

8. The Pivot disc will lay flat against the the black pivot disc, the gap should be minor

Bell Powersports
5550 Scotts Valley Drive
Scotts Valley, Ca 95066
tel. 831-461-7500

Customer Service
1001 Innovation Road
Rantoul, IL 61866
tel. 800-776-5677
fax. 800-888-9009



BELL SPORTS, INC.
www.bellhelmets.com
www.facebook.com/BellPowersports
www.twitter.com/BellPowersports
instagram.com/bell_powersports



PS100470